



globtech

LAUNCHER

APPLICATION FOR AUTOMATIC LAUNCHING AND
MONITORING OF TASKS
IN MS SQL SERVER 2005 AND HIGHER

YOUR JOURNEY FROM DATA TO INFORMATION

BUSINESS INTELLIGENCE DATA INTEGRATION SUCCESS
COMPLETE SOLUTIONS
WAREHOUSING

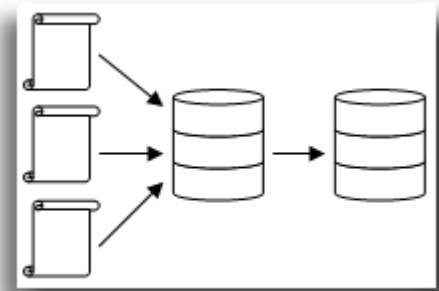
INTRODUCTION

LAUNCHER IS AN APPLICATION WHICH ALLOWS AUTOMATION OF LAUNCHING TASKS (DATABASES PROCEDURE AND SSIS PACKAGES PROCEDURES) IN ENVIRONMENT MICROSOFT SQL SERVER 2005 AND HIGHER. ITS TYPICAL USE IS IN CASES OF REGULAR (DAILY, MONTHLY...) LAUNCHING ALL THE TIME THE SAME TASKS, EG. DOWNLOADING OF EXTRACTS INTO DATABASE, EXPORT DATA FROM ONE DATABASE TO THE OTHER OR OTHER ETL.

ITS PERFORMANCE UNIT CONSISTS OF A SERIES OF MANAGEMENT DATABASE TABLES AND T-SQL SAVED PROCEDURES. THE LAUNCH OF TASK IS PROVIDED BY SQL SERVER AGENT.

ITS PERFORMANCE UNIT CONSISTS OF A SERIES OF MANAGEMENT DATABASE TABLES AND T-SQL SAVED PROCEDURES. THE LAUNCH OF TASK IS PROVIDED BY SQL SERVER AGENT.

USER INTERFACE (USER CONSOLE) HAS CHARACTER OF WEB APPLICATION, IS CREATED IN C# ASP.NET 2.0. AUTHORIZED USER CAN CREATE AND EDIT TASKS AND DIRECTLY ADMINISTER THEIR PROCESSING (MONITOR THE COURSE OF PROCESSING, RESTART AND LAUNCH TASKS IMMEDIATELY ETC.).



FUNCTIONS

GROUPING TASKS INTO GROUPS – JOBS, STEPS

- JOB – GROUP OF LOGICALLY RELATED TASKS
- STEP – TASK – ONE JOB STEP
- JOB CONTAINS SEVERAL STEPS, SEQUENCE OF STEPS IN JOB IS FIXED
- DEPENDENCIES BETWEEN JOBS – ORDER OF PROCESSING NOT ONLY IN THE JOB, BUT ALSO AMONG THEM

PARALLELISM AND PRIORITIZATION

- LAUNCH MORE TASKS AT THE SAME TIME
- POSSIBILITY TO DEFINE, WHICH TASKS CAN AND WHICH CANNOT RUN IN PARALLEL
- POSSIBILITY TO INFLUENCE THE ORDER OF PROCESSING TASKS WITH PRIORITY

ADVANCED PLANNING OF THE JOBS AND STEPS

- COMPARABLE OPPORTUNITIES WITH SCHEDULES V SQL AGENT SERVER, LAUNCH OF TASKS DAILY, WEEKLY, MONTHLY, JUST IN WORKING DAYS, ETC.
- POSSIBILITY TO COMBINE MORE OF EXECUTION PLANS

FAULT RESISTENCE

- SEPARATION LAUNCHING TASKS FROM LAUNCHER ADMINISTRATION – FALL OF TASK DOES NOT MEAN FALL OF LAUNCHER
- EACH OF THE TASK RUNS AS INDEPENDENT PROCESS (SQL SERVER AGENT JOB)

EMAIL NOTIFICATION

- SENDING MESSAGES GENERATED WHILE PROCESSING – SUCCESSFUL END OF JOB, TASK ERRORS, ETC.

INTELLIGENT HANDLING OF ERRORS

- MECHANISM OF RECOVERY – AUTOMATIC REACTION TO THE OUTCOME OF THE JOBS RUN (EMAIL SENDING, TASK RESTART, LAUNCH OF CORRECTIVE TASK)
- CRITICAL AND NOT CRITICAL ERRORS: CRITICAL TASKS –WHEN AN ERROR OCCURS IN THE TASK TO SUSPEND FURTHER PROCESSING; NON CRITICAL TASKS – THE PROCESSING WILL NOT BE STOPPER BY THE FAILURE OF THE TASK
- ERRORS LOGGING IN LAUNCHER RUNNING ALSO IN TASK RUNNING, BROWSING, THE ERROR LOG DIRECTLY FROM THE APPLICATION

EDITING ENVIRONMENT

- LAUNCHER COMPLETE ADMINISTRATION FROM USER INTERFACE, MINIMUM DIRECT INTERVENTION INTO DATABASE(SPECIAL MAINTENANCE)
- POSSIBILITY TO CREATE JOBS, STEPS, TASKS, EXECUTIVE PLANS
- MONITORING OF PROCESSING, POSSIBILITY TO ACTIVELY INTERVENE IN THE RUN OF PROCESSING (SUSPEND, RESTART, TASK CANCELING)

CUSTOMIZATION

- COLOR TUNING APPLICATION
- TYPES OF LAUNCHING TASKS



SAMPLE OF USER INTERFACE

IMG. 1 - MONITORING OF JOBS PROCESSING

Job Log - Windows Internet Explorer

http://localhost/launcher/JobLog.aspx

Launcher Job Log

Enqueuers: 1 / 1 running SP Workers: 3 / 7 running Autorefresh (60s) | Last at 11:11:43
 Dispatchers: 1 / 1 running SSIS Workers: 0 / 4 running Refresh Now

Job Setup Job Logs Job Reports Launcher Control

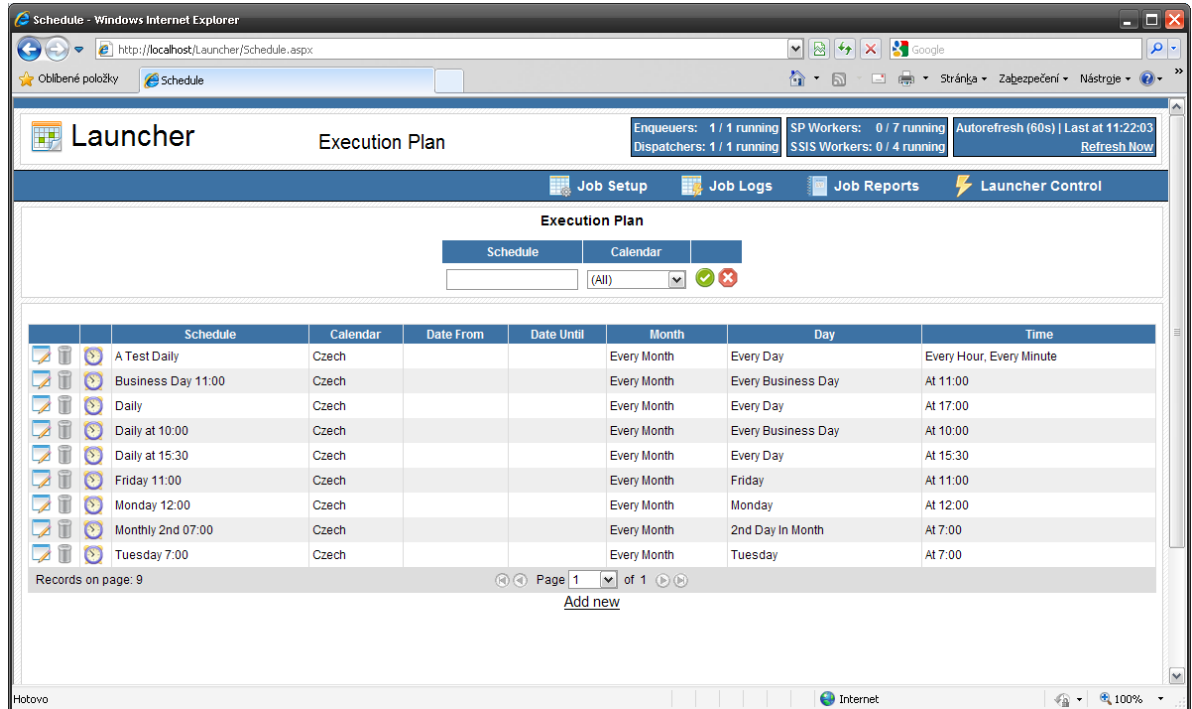
Job Log

Job	Enq. Manually	Status	Result	Date
(All)	(All)	(All)	(All)	Scheduled At

Job Name	Enq. Manually	Business Date	Scheduled At	Start - End	Run Time	# Steps	I / U / D / KI	Status	Result
FLR	Yes	7.2.2011	7.2.2011 11:11:00	-	00:00:00	1	0 / 0 / 0 / 0	ReadyToRun	
SSIS PKGS	Yes	7.2.2011	7.2.2011 11:11:00	-	00:00:00	1	0 / 0 / 0 / 0	ReadyToRun	
SP PRV 1	Yes	7.2.2011	7.2.2011 11:11:00	-	00:00:00	2	0 / 0 / 0 / 0	ReadyToRun	
Weekly Load	Yes	7.2.2011	7.2.2011 11:11:00	7.2.2011 11:11:27 -	00:00:16	2	0 / 2199 / 0 / 0	Running	
Daily Load	Yes	7.2.2011	7.2.2011 11:11:00	7.2.2011 11:11:25 -	00:00:18	5	3240 / 0 / 0 / 0	Running	
SP 1	Yes	7.2.2011	7.2.2011 11:11:00	7.2.2011 11:11:25 -	00:00:18	3	3000 / 2199 / 1500 / 0	Running	
Same Task	Yes	7.2.2011	7.2.2011 11:11:00	7.2.2011 11:11:26 - 7.2.2011 11:11:36	00:00:10	1	3308 / 0 / 0 / 0	Resolved	Success
Run SQL	Yes	7.2.2011	7.2.2011 11:11:00	7.2.2011 11:11:26 - 7.2.2011 11:11:31	00:00:05	1	0 / 0 / 0 / 0	Resolved	Success
Daily Load	No	6.2.2011	7.2.2011 11:00:00	7.2.2011 11:10:58 - 7.2.2011 11:11:31	00:00:33	5	0 / 2199 / 0 / 0	Resolved	Success
SSIS PKGS	No	4.2.2011	4.2.2011 17:00:00	4.2.2011 17:00:48 - 4.2.2011 17:00:51	00:00:03	1	0 / 0 / 0 / 0	Resolved	Warning
FLR	No	3.2.2011	4.2.2011 17:00:00	4.2.2011 17:00:32 - 4.2.2011 17:00:48	00:00:16	1	0 / 0 / 0 / 0	Resolved	Success
SP 1	No	3.2.2011	4.2.2011 17:00:00	4.2.2011 17:00:00 - 4.2.2011 17:00:27	00:00:27	3	0 / 8097 / 0 / 0	Resolved	Success
SSIS PKGS	No	2.2.2011	2.2.2011 17:00:00	2.2.2011 17:00:51 - 2.2.2011 17:00:55	00:00:04	1	0 / 0 / 0 / 0	Resolved	Warning
FLR	No	1.2.2011	2.2.2011 17:00:00	2.2.2011 17:00:30 - 2.2.2011 17:00:46	00:00:16	1	0 / 0 / 0 / 0	Resolved	Success

Hotovo

IMG. 2 – JOBS PLANNING



IMG. 3 – JOB CONFIGURATION

